

HEAVY-DUTY
PIT JACKS

SCORPION PJ15



Turn your under-utilized inspection pit
or lube pit into a full service bay with
a PJ15 Pit Jack

Ideal for all Heavy-Duty Truck and Bus
repair shops.



Perform service on
wheels and tires
brakes & suspension
alignment and much more...

15,000 Lb. Cap.
Dual Hydraulic Cylinders
Three Stage Safety Lock
Low Profile Design

HEAVY-DUTY PIT JACKS

SCORPION PJ15



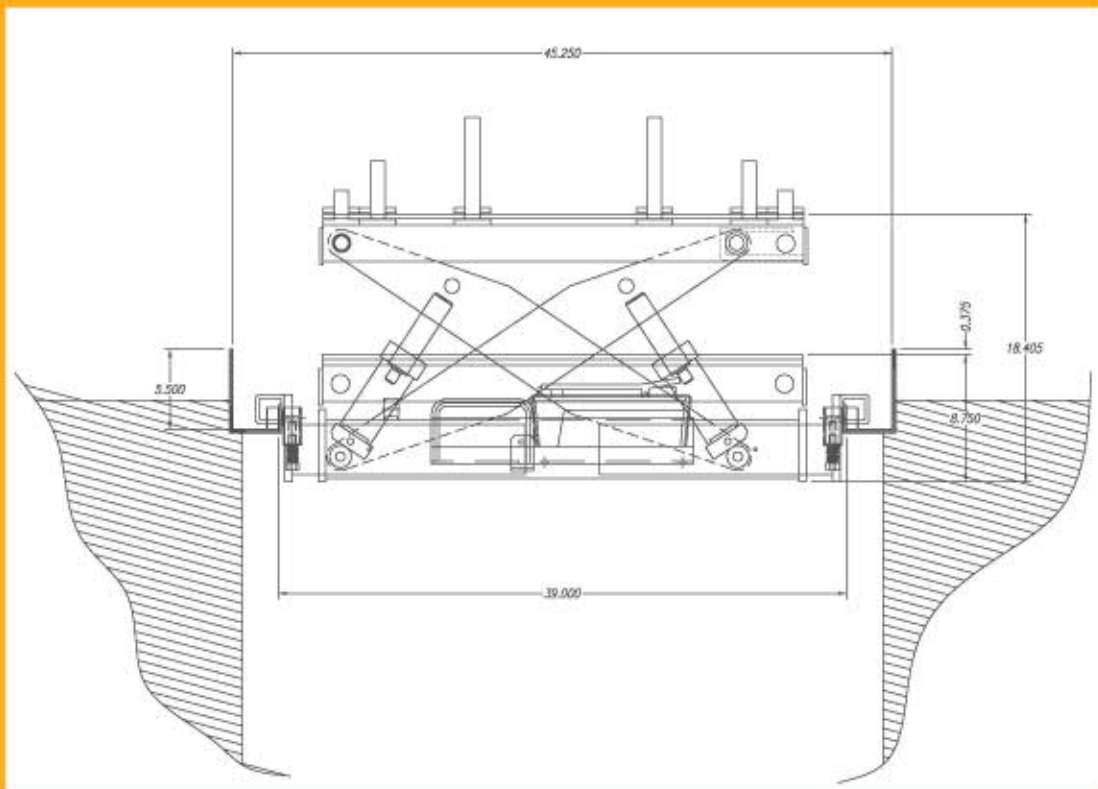
Lock engaged



Lock dis-engaged

All new three stage safety lock
with pneumatic release

Typical Pit



All Scorpion Pit Jacks are custom designed to fit your pit